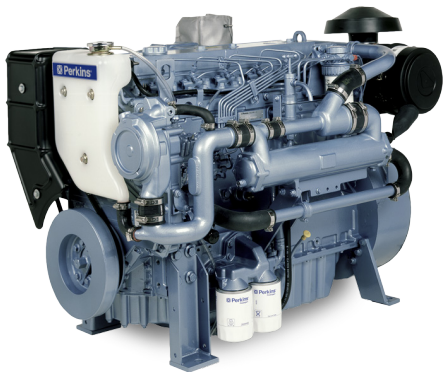


Marine Auxiliary Engine

6TG2AM

1006 Series



Based on Perkins universally acclaimed 1000 Series and renowned throughout the power generation industry for its superior performance and reliability. The Perkins 6TG2AM is a turbocharged, six cylinder, six litre engine.

Operator and environmentally friendly with low noise, rapid startability and low emissions. This is achieved with the 'QUADRAM' combustion system and fully closed breather system

Competitive engine and parts pricing, extended service intervals and exceptionally low fuel consumption make the 6TG2AM a cost effective choice with significant owner savings over alternative engines

Our commitment to quality is your guarantee of reliability

Powered By Your Needs

Perkins engines can be tailored specifically for you. These engines offer a choice of standard build configurations to match the needs of customers for a diverse range of applications.

World Class Product Support

With 80 years experience, we are experts in the engines industry. At Perkins we are constantly researching, developing and investing in our products and services. Strong global support is provided through a network of over 130 distributors and service outlets in 184 countries, providing access to over 50,000 parts and exchange units 24 hours a day, 365 days a year.

Lower Operating Costs

Service intervals 250 hours as standard and Perkins provides comprehensive warranty cover for 2 years, with 3 years on major engine components.

Economic Power

One side servicing and translucent header tank for reduced service time and cost. Unique Quadram combustion system enables high output with lower fuel consumption and noise. Extended service intervals, including 400 hour (or 12 months) oil change period, and competitively priced parts provide low cost of ownership

Durable Power

Maximum cooling efficiency is provided by a gear driven water pump. Leak free operation is ensured by Viton crankshaft seals and sophisticated controlled swell joints

Reliable Power

Suitable for operation in ambient temperatures up to 50°C and sea waters up to 38°C. Fuelled starting aid for temperatures down to -20°C. Approved by classification societies and marine authorities

Engine speed rev/min	Type of operation	Typical output (net)		Power (gross)		Typical fuel consumption		
		kWe	kVa	kW	bhp	UK gals/hr	Litres/hr	US gals/hr
1500	Prime power 110%	83.5	104.0	92.5	124.0	5.0	23.0	6.1
		92.5	114.0	101.5	136.0	5.9	26.7	7.0
1800	Prime power 110%	99.0	124.0	110.0	147.5	6.0	27.2	7.2
		109.0	136.0	121.0	162.0	6.8	31.0	8.2

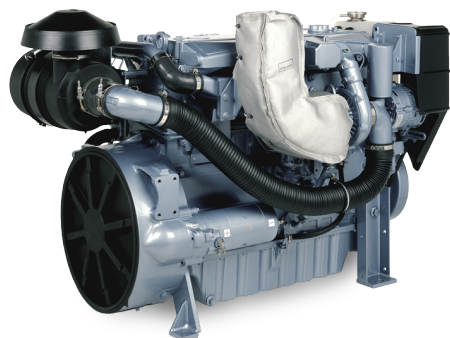
These ratings represent the performance capabilities to conditions specified in BS5514:1996, ISO 3046/1:1995 and DIN 6271. Test Conditions Air temperature 25°C (80.6°F) barometric pressure 100 kPa (29.5 in Hg), relative humidity 30%, maximum exhaust back pressure 5 kPa, maximum inlet restriction 1 kPa. For operation outside of these conditions please consult your Perkins contact. Performance tolerance quoted by Perkins is ± 5%. Electrical ratings assume a power factor of 0.8 and a generator efficiency of 90%.

 **Perkins**[®]

THE HEART OF EVERY GREAT MACHINE

6TG2AM

1006 Series



Benefits:

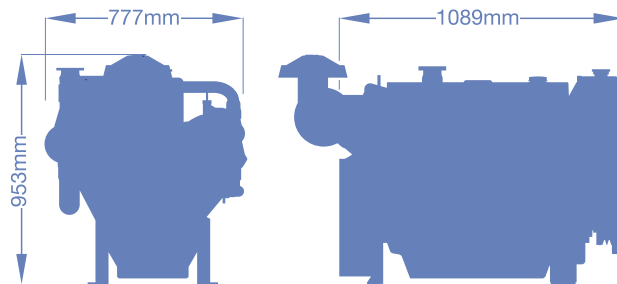
- Excellent power to weight
- Ease of Installation
- Clean, quiet, smooth operation
- Excellent fuel economy
- Easy to maintain with 500hr Service interval
- Reliability

Standard Features

- Heavy duty - dry element
- Closed circuit beathing system
- Thermostat controlled fresh water heat exchanger cooling system with gear driven raw and fresh water pumps, deaeration header tank and high quality silicone hoses or engine with gear driven fresh water pump adapted for keel cooling
- Fresh water cooled exhaust manifold with side mounted turbocharger (insulated)
- Stanadyne rotary fuel pump with electrics top solenoid Fuel lift pump, cannister filter and agglomerator
- Mechanical speed control to BS5514 Class1
- High inclination aluminium sump with dipstick on LHS of engine
- Twin lube oil filters and block mounted plate type oil cooler
- Engine mounted sump drain pump
- Belt cover
- Fuelled starting aid down to -20°C (-4°F)

Optional Equipment

- Backend - SAE 3 or twin starter pocket SAE 2.
- 12 or 24 volt marine insulated electrics.
- Exhaust outlets either dry with bellows and silencer or water injected.
- Electronic governor with Isochronous governing and speed control to $\pm 0.25\%$.
- Heat exchanger and keel cooling.
- Fuel filters with change over facility.
- Double skinned, high pressure, fuel pipes.
- PTO facility.
- Engine mounting feet.
- 5000 hrs parts kit.
- Toolkit



General Data	
Number of cylinders	Vertical in-line 6 cylinder
Bore and stroke	100 mm x 127 mm
Displacement	5.99 litres
Aspiration	Turbocharged
Cycle	4 stroke
Combustion system	Direct injection
Compression ratio	16:1
Rotation	Anti-clockwise viewed on flywheel
Cooling system	24 litres
Operational angle	25° from horizontal in any direction
Dimensions	Length 1089 mm, Width 777 mm, Height 953 mm
Dry weight	479 kg
Wet weight	626 kg
Final weight and dimensions will depend on completed specification	

Rating Definitions

Prime power

Power for continuous service. Overload of 10% is permitted for 1 hour in very 12 hours' operation.

For further details on definitions please contact your local Perkins distributor.

Distributed by